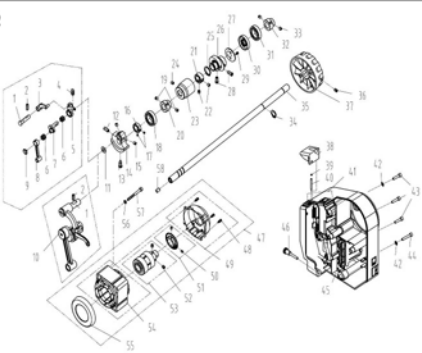


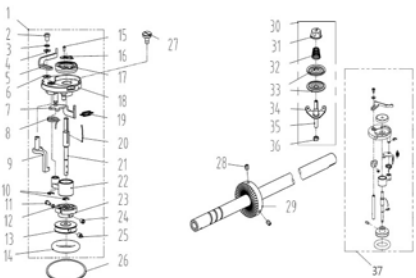
1. 机座、外装部件/Machine Frame & Miscellaneous Cover Components

序号 NO	名称/名称	Part NO	名称	Part Name	零件描述	Description	数量	Number
1	101511001		螺钉 3M5/16" × 28 L=9	Screw 3M5/16" × 28 L=9			3	
2	10121001		橡胶密封片/橡胶垫	Rubber plug			2	
3	14417001		橡胶密封片	Rubber card			1	
4	14401006		螺母	Nut plate			1	
5	11813005		轴套	Thread guide left			1	
6	101511007		螺钉 3M11/64" × 40 L=6	Screw 3M11/64" × 40 L=6			2	
7	303979		橡胶密封片 (V型)	Rubber plate axis			1	
8	14422001		针杆轴套	Needle bar oil seal set			1	
9	14422004		针杆套	Rubber plate spacer			1	
10	15122003		橡胶密封片	Rubber plug			1	
11	10122006		橡胶密封片/橡胶垫	Rubber plug			3	
12	10122004		针杆轴套	Rubber plug			3	
13	101511004		螺钉 3M5/16" × 28 L=7	Screw 3M5/16" × 28 L=7			3	
14	14817018		橡胶密封片/橡胶垫	Thread take-up lower cover			1	
15	13512004		三孔轴套	3-hole thread guide			1	
16	11418001		刀片	Knife			1	
17	114511013		螺钉 3M5/64" × 40 L=6	Screw 3M5/64" × 40 L=6			1	
18	21022001		橡胶密封片	Rubber plug			1	
19	11012016		油封垫圈	Oil sealing washer			1	
20	11822001		橡胶密封片	Rubber plug			4	
21	14418021		橡胶密封片	Oil permeating plate			1	
22	14511001		螺钉 3M5/16" × 40 L=5	Screw 3M5/16" × 40 L=5			2	
23	14418022		橡胶密封片	Oil curtain			1	
24	114422007		侧板轴套	Side plate spacer			1	
25	114412005		侧板轴套/侧板套				1	
26	301001		内板轴套/内板套				1	
27	10128016		橡胶密封片/橡胶垫	Washer			1	
28	13817001		卡扣	Buckle			1	
29	504021		螺钉 3M4 L=4	Screw 3M4 L=4			1	
30	101511004		螺钉 3M5/16" × 38 L=9	Screw 3M5/16" × 38 L=9			6	
31	930000172		侧板轴套	Side plate			1	
32	14422002		橡胶密封片/橡胶垫	Pin joint			1	
33	303980		橡胶密封片/橡胶垫	Press bar electromagnet cover plate			1	
34	101511013		螺钉 3M5/16" × 40 L=5	Screw			1	
35	14417022		橡胶密封片	Wire clamp			1	
36	101511001		螺钉 3M5/16" × 28 L=9	Screw 3M5/16" × 28 L=9			12	
37	10122006		橡胶密封片/橡胶垫	Rubber plug			1	
38	10122005		橡胶密封片/橡胶垫	Rubber plug			1	
39	13850501		螺钉 3M3 L=12	Screw 3M3 L=12			2	
40	11441001400		橡胶密封片/橡胶垫 (橡胶密封片)	Control panel			1	
41	14417002		橡胶密封片	Head card			1	
42	14322007		橡胶密封片 (橡胶)	Four-hole Rubber plug			1	
43	141130040		橡胶密封片/橡胶垫	Thread tension stop			1	
44	141130019		橡胶密封片/橡胶垫	Thread tension nut			1	
45	11227001		橡胶密封片/橡胶垫	Thread tension spring			1	
46	14112012		橡胶密封片/橡胶垫	Thread tension disk			2	
47	13810008		橡胶密封片/橡胶垫	Thread tension post			1	
48	13812006		橡胶密封片/橡胶垫	Thread tension guide plate			1	
49	138500006		螺钉 3M5/16" × 28 L=7	Screw 3M5/16" × 28 L=7			1	
50	11411300300		橡胶密封片/橡胶垫	Thread tension arm			1	
51	141516013		橡胶密封片/橡胶垫 (橡胶)	Thread tension stop (H)			1	
52	10122007		橡胶密封片/橡胶垫	Thread tension nut			1	
53	10127002		橡胶密封片/橡胶垫	Thread disk rotating stopper			1	
54	11427002		橡胶密封片/橡胶垫 (橡胶)	Thread tension spring			1	
55	14112015		橡胶密封片/橡胶垫	Thread tension spring (H)			1	
56	14112015		橡胶密封片/橡胶垫	Thread tension disk			2	
57	114112023		橡胶密封片/橡胶垫	Disk stopper			1	
58	141530001		橡胶密封片/橡胶垫	Thread tension post			1	
59	113827008		橡胶密封片/橡胶垫	Thread take-up spring			1	
60	113827009		橡胶密封片/橡胶垫	Thread take-up spring (H)			1	
61	10100011		橡胶密封片/橡胶垫	Thread tension arm			1	
62	101515005		螺钉 3M5/64" × 40 L=0.5	Screw 3M5/64" × 40 L=0.5			1	
63	10122014		橡胶密封片/橡胶垫	Seal ring			1	
64	101515010		螺钉 3M15/64" × 28 L=10.5	Screw 3M15/64" × 28 L=10.5			1	
65	14403001		橡胶密封片/橡胶垫	Groove with null support sleeve			1	
66	1445600500		橡胶密封片/橡胶垫	Groove with null arm			1	
67	11489000100		橡胶密封片/橡胶垫	Needle feed device			1	
68	201514007		螺钉 3M4 L=6	Screw 3M4 L=6			1	
69	13113001		橡胶密封片/橡胶垫	Thread guide			1	
70	401516001		橡胶密封片/橡胶垫 (橡胶)	Rail 3M5/64" × 40			1	
71	10118004		橡胶密封片/橡胶垫	Thread guide right			1	
72	13812019		橡胶密封片/橡胶垫	Ruler stop seat			1	
73	101511002		螺钉 3M11/64" × 40 L=5.5	Screw 3M11/64" × 40 L=5.5			1	
74	13118001		橡胶密封片/橡胶垫	Head plate			1	
75	13115002		橡胶密封片/橡胶垫	Head plate (H)			1	
76	104517002		螺钉 3M11/64" × 40 L=6.5	Screw 3M11/64" × 40 L=6.5			2	
77	140032001		橡胶密封片/橡胶垫	Machine head stop			2	
78	101511019		螺钉 3M5/32" × 56 L=2	Screw 3M5/32" × 56 L=2			2	
79	10127005		橡胶密封片/橡胶垫	Side plate spring			1	
80	10118002		橡胶密封片/橡胶垫	Screw			1	



2. 上轴、挑线部件/Main Shaft & Thread Take-up Components

序号 NO	公司件号	Part NO	名称	PartName	零件描述	Description	数量	Number
1	12226001		挑线通杆销		Thread take-up connecting rod pin		1	
2	101515001		螺钉SM15/64×28 L=13		Screw SM15/64×28 L=13		1	
3	11305010		挑线通杆 (厚料)		Thread take-up connecting rod (H)		1	
4	14422008		挑线杆断油橡胶		Thread take-up lever rubber		1	
5	1133800200		挑线杆分组件 (厚料)		Thread take-up lever asm (H)		1	
	13538003		挑线杆分组件 (HL)		Thread take-up lever asm (HL)		1	
6	10124001		挑线杆滚针轴承 (厚料)		Needle bearing (H)		2	
7	11310010		挑线曲柄分组件 (厚料)		Thread take-up crank (H)		1	
8			针杆通杆 (厚料)		Needle bar connecting rod (H)		1	
9	101517001		螺钉SM6/64×40 (左置) L=4.8		Screw SM6/64×40 (Left hand) L=4.8		1	
10	1443800100		挑线组件		Thread take-up lever asm		1	
11	10112003		针杆曲柄护圈		Needle bar crank protecting plate		1	
12	101515004		螺钉SM6/32×28 L=16		Screw SM6/32×28 L=16		1	
13	101511003		螺钉SM6/32×28L=11		Screw SM6/32×28L=11		1	
14	13804001		针杆曲柄		Needle bar crank		1	
	10404001		针杆曲柄 (厚料)		Needle bar crank (H)		1	
15	101515002		螺钉SM1/4×40 L=6		Screw SM1/4×40 L=6		2	
16	14408001		针杆曲柄凸圈		Needle bar crank snap ring		1	
17	510026		螺钉M3 L=3		Screw M3 L=3		2	
18	810046		深沟球轴承		Needle bearing		1	
19	510018		螺钉M6×0.75 L=6		Screw M6×0.75 L=6		2	
20	14303008		上轴前轴承套		Bearing bush		1	
21	10108001		上轴凸圈		Main shaft thrust collar		1	
22	101514001		螺钉SM1/4×40 L=6		Screw SM1/4×40 L=6		2	
23	14403001		上轴中轴套		Main shaft bushing mid		1	
24	101515006		螺钉SM15/64×28 L=7		Screw SM15/64×28 L=7		1	
25	W03002		挡圈20		Snap ring 20		1	
26	400811		送料偏心轮 (薄)		Feed eccentric cam (H)		1	
	400092		送料偏心轮		Feed eccentric cam		2	
27	10112017		送料偏心轮盖板		Cover plate		1	
	10812002		送料偏心轮盖板 (厚料)		Cover plate (H)		1	
28	101511013		螺钉SM1/4×40 L=13		Screw SM1/4×40 L=13		2	
29	113511003		螺钉SM6/64×40 L=5		Screw SM6/64×40 L=5		2	
30	14422009		上轴后油封		Oil seal		1	
31	14403008		上轴轴承套		Bearing bush		1	
32	806023		GB/T276-2013 轴承61904-2RS		Needle bearing		1	
33	510018		螺钉M6×0.75 L=6		Screw M6×0.75 L=6		2	
34	W03001		GB/T894.1-1986挡圈15		Snap ring 15		1	
35	114402003		上轴		Main shaft		1	
36	510009		螺钉M6 L=8		Screw M6 L=8		2	
37	113835001		手轮		Hand wheel		1	
38	114411009		分圈圈				1	
39	12922015		橡皮圈		Rubber plug		1	
40	13826009		滚珠凸销轴		Pin		1	
41	11503001400		一体机电控罩壳组件		Electronic control box		1	
42	W01009		GB/T97.1-1985垫圈 5		Washer 5		2	
43	114513001		螺钉M5 L=20		Screw M5 L=20		3	
44	114530001		螺母M5 L=25		Screw M5 L=25		1	
45	11503001300		一体机电控组件		Electronic control box		1	
46	144530001		电控伺服驱动器螺钉		Screw		1	
47	113830001		光电伺服电机		Servo motor		1	
48	951515011		螺钉组合件M3 L=12		Screw asm M3 L=12		5	
49	95100172		电机罩壳组件		Encoder housing assembly		1	
50	509022		内六角平端紧定螺钉M3 L=4		Screw M3 L=4		1	
51	95100116		电机光栅组件		Motor grating sensor asm		1	
52	509162		内六角平端紧定螺钉M6 L=6		Screw M6 L=6		1	
53	95100182		电机转子总成		Motor rotor		1	
54	95100171		电机定子总成		Motor stator/pping		1	
55	13811060		绝缘防护罩		Insulating shield		1	
56	W02058		垫圈d5		Washer d5		3	
57	505901		螺钉M5 L=50		Screw M5 L=50		1	
58	10122012		上轴孔圈		Rubber plug		1	

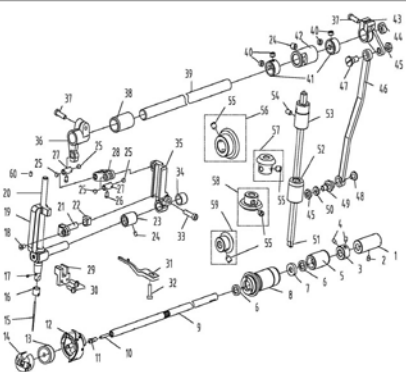


3. 绕线部件/ Bobbin Components (1)

序号 NO	公司件号	Part NO	名称	PartName	零件描述	Description	数量	Number
1	1413104900		绕线器组件		Bobbin winder asm		1	
2	114511008		螺钉M4 L=6		Screw M4 L=6		1	
3	W02863		GB/T 93弹垫垫圈4		Washer 4		1	
4	W01142		GB/T 93.1平垫圈4		Washer 4		1	
5	14113002		压线控制板		Pressure line control board		1	
6	14112020		垫圈		Washer		1	

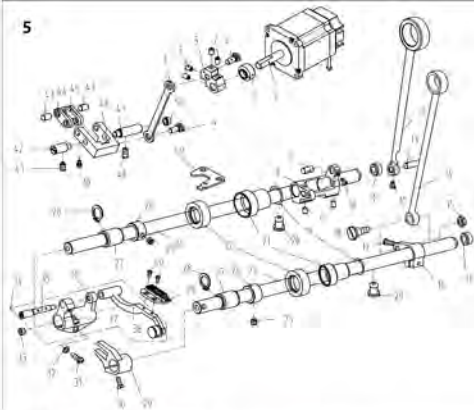
3. 绕线部件/ Bobbin Components (2)

序号 NO	公司件号 Part NO	名称 PartName	零件描述 Description	数量 Number
7	13812110	调节板	Regulating plate	1
8	13827011	复位定位簧	Reset spring	1
9	1411000000	绕线凸轮组件	Winding cam asm.	1
10	11329000	开口垫圈5	Ring 5	2
11	1141N510001	螺钉SM5/54*40 L=11	Screw SM5/54*40 L=11	1
12	W02865	GB/T 93弹垫垫圈3	Washer 3	1
13	14111004	绕线轮	Winding wheel	1
14	O01110	O形圈25x7	O ring 25x7	1
15	S04090	螺钉M2 L=4	Screw M2 L=4	1
16	14119003	割线刀	Secant cutter	1
17	113831003	绕线衬垫	Winding gasket	1
18	113831002	绕线器主轴盖座	The main seat	1
19	10127061	复位扭簧	Drag spring	2
20	14127060	弹簧	Spring	1
21	14103003	绕线器主轴	principal axis	1
22	1410510600	绕线器连杆组件	Bobbin connecting rod asm	1
23	14111006	主动轮	Driven wheel	1
24	N07008	螺母SM5/54*~40	Nut SM5/54*~40	1
25	S09103	螺钉M4 L=4	Screw M4 L=4	2
26	11422062	垫圈垫	Washer	1
27	114531003	螺钉SM3/16*~28 L=10	Screw SM3/16*~28 L=10	3
28	S10009	螺钉M6 L=8	Screw M6 L=8	2
29	11435013	绕线器驱动轮	Driving wheel	1
30	1411300600	绕线夹线器	Bobbin thread tension asm.	1
31	141350019	小夹线器螺母	Thread tension nut	1
32	11427006	小夹线弹簧	Spring	1
33	14113015	夹线板	Thread tension disk	2
34	11413022	夹线过线板	Thread tension guide plate	1
35	112513004	夹线螺钉	Screw	1
36	114531001	螺母SM11/54*~40	Nut SM11/54*~40	1
37	1383103900	绕线器组件 (HL)	Bobbin winder asm (HL)	1



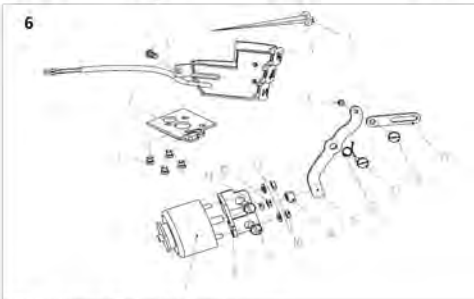
4. 针杆、压脚、下轴部件/Needle bar & Upright Shaft & Hook Driving Shaft Components

序号 NO	公司件号 Part NO	名称 PartName	零件描述 Description	数量 Number
1	10403019	下轴后轴套	Hook driving shaft bushing back	1
2	113514020	螺钉SM11/64"×40 L=6	Screw SM11/64"×40 L=6	1
3	114514001	螺钉SM11/64"×40 L=4 (HL)	Screw SM11/64"×40 L=4 (HL)	1
4	10108002	下轴轴套	Hook driving shaft snap ring	1
5	101511012	螺钉SM11/64"×40 L=4.8	Screw SM11/64"×40 L=4.8	2
6	14003004	下轴中套	Lower shaft middle bushing	1
7	11522001	油封组件12	Oil seal 12	2
8	114122004	油封组件	Oil seal	1
9	14103004	下轴前轴套组件	Lower shaft before bushing asm	1
10	13823001	下轴	Hook driving shaft	1
11	13823001	下轴油芯	Oil wick	1
12	101530005	螺钉SM1/16"×32	Set screw SM1/16"×32	1
13	11418003	薄料盘钩	Hook asm	1
14	11418004	广源厚料盘钩 (厚料)	Hook asm (H)	1
15	13618005	盘钩组件 (HL)	Hook asm (HL)	1
16	113818002	广源厚料盘钩 (1.3倍) (-P)	Hook asm (-P)	1
17	10118003	梭芯	Bobbin	1
18	10818501	梭芯 (HL)	Bobbin (HL)	1
19	13818002	梭芯 (1.3倍) (-P)	Bobbin (-P)	1
20	11218504	梭壳	Bobbin case asm	1
21	13618004	梭壳 (HL)	Bobbin case asm (HL)	1
22	13818003	梭壳 (1.3倍) (-P)	Bobbin case asm (-P)	1
23	13817001	针D8x1#14	Needle D8x1#14	1
24	10117002	针D10P×#21 (厚料)	Needle D10P×#21 (H)	1
25	10113002	针杆线导	Needle bar thread guide	1
26	11412063	针杆线导 (厚料)	Needle bar thread guide (H)	1
27	104511006	螺钉SM1/8"×44 L=4.5	Screw SM1/8"×44 L=4.5	1
28	101511005	螺钉SM5/64"×40 L=6	Screw SM5/64"×40 L=6	1
29	1440100100	针杆支架组件	Needle bar support asm	1
30	14402012	针杆	Needle bar	1
31	14402014	针杆 (DLC)	Needle bar (H)	1
32	14438002	针杆连接柱 (DLC)	Needle bar connecting rod	1
33	114409004	针杆连接柱滑块	Slide block	1
34	14403006	针杆支架轴套	Needle bar stand collar	1
35	138508006	螺钉SM3/16"×28 L=7	Screw SM3/16"×28 L=7	2
36	13111002	塞子	Plug	4
37	113101004	螺钉SM5/64"×40 L=6	Screw SM5/64"×40 L=6	2
38	14426007	驱动连杆销	Driving connecting rod pin	2
39	14405002	驱动连杆	Driving connecting rod	1
40	14409004	针杆支架导轨	Needle bar guide	1
41	101511010	螺钉SM5/64"×40 L=11	Screw SM5/64"×40 L=11	2
42	10112016	手指定位器	Finger postoner	1
43	10112032	手指定位器 (厚料)	Finger postoner (H)	1
44	116511005	螺钉SM11/64"×40 L=13	Screw SM11/64"×40 L=13	1
45	144513001	螺钉SM3/16"×28 L=20	Screw SM3/16"×28 L=20	1
46	131807001	滚针轴承	Needle bearing	1
47	14409003	滑动导轨	Sliding block guide rail	1
48	14404001	针头驱动曲柄销	Sent front drive the crank pin	1
49	101511016	螺钉SM3/16"×28 L=14	Screw SM3/16"×28 L=14	2
50	14403004	针头驱动轴套	Before the needle swing axle sleeve	1
51	14402009	针头驱动轴	Needle bar swing axle	1
52	135515004	螺钉SM1/4"×40 L=4	Screw SM1/4"×40 L=4	4
53	13108002	环	Ring	2
54	14403005	针头驱动轴套	After the needle swing axle sleeve	1
55	14404002	针头驱动曲柄销	After driving the crank	1
56	10122006	送料调节孔塞	Rubber plug	1
57	131401002	螺母SM15/64"×28	Nut SM15/64"×28	2
58	14405001	针头驱动轴	Needle connecting rod	1
59	144520005	针头驱动曲柄销轴套螺钉	After needle to drive the crank shaft screw	1
60	144501001	螺钉SM11/64"×40 L=6	Screw SM11/64"×40 L=6	1
61	144520006	针头驱动曲柄销轴套	Driving crank adjustment screw	1
62	140128013	垫圈6.2×13×1	Washer 6.2×13×1	1
63	10102007	直轴	Upright shaft	1
64	113803004	直轴下轴套	Upright shaft bushing lower	1
65	10403020	直轴上轴套	Upright shaft bushing upper	1
66	113511036	螺钉SM5/64"×28 L=4.7	Screw SM5/64"×28 L=4.7	1
67	101515014	螺钉SM1/4"×40 L=7	Screw SM1/4"×40 L=7	8
68	10425004	上轴伞齿轮	Upper shaft bevel gear	1
69	10425003	上轴小伞齿轮	Upper small bevel gear asm	1
70	10425002	下轴大伞齿轮	Lower large bevel gear asm	1
71	10425001	下轴伞齿轮	Hook drive shaft bevel gear	1
72	10123002	针杆上轴套 (厚料)	Rubber plug (H)	1



5. 送料部件 / Feed Mechanism Components

序号 NO	公称型号	Part NO	名称	Part Name	零件描述	Description	数量	Number
1	114001001		针座轴杆	Needle shaft	Needle punch rod		1	
2	2140001		螺钉 M4 x 4	Screw M4 x 4	Screw M4 x 4		4	
3	114004001		针座轴杆	Needle shaft	Needle punch rod		1	
4	114026001		针座轴杆	Needle shaft	Needle punch rod		1	
5	114031001		针座轴杆	Needle shaft	Needle punch rod		1	
6	115000113		针座轴杆	Needle shaft	Needle punch rod		1	
7	10126011		针座轴杆	Needle shaft	Needle punch rod		1	
8	14404004		针座轴杆	Needle shaft	Needle punch rod		1	
9	144014001		针座轴杆	Needle shaft	Needle punch rod		1	
10	101511001		针座轴杆	Needle shaft	Needle punch rod		1	
11	114022002		橡胶塞	Rubber plug	Rubber plug		1	
12	400001		针座轴杆	Needle shaft	Needle punch rod		1	
13	14005002		针座轴杆	Needle shaft	Needle punch rod		1	
14	10126006		针座轴杆	Needle shaft	Needle punch rod		1	
15	400001		针座轴杆	Needle shaft	Needle punch rod		1	
16	101516001		针座轴杆	Needle shaft	Needle punch rod		1	
17	101516016		针座轴杆	Needle shaft	Needle punch rod		1	
18	101520005		针座轴杆	Needle shaft	Needle punch rod		1	
19	114022001		针座轴杆	Needle shaft	Needle punch rod		1	
20	14022006		针座轴杆	Needle shaft	Needle punch rod		1	
21	14001001		针座轴杆	Needle shaft	Needle punch rod		1	
22	114020000		针座轴杆	Needle shaft	Needle punch rod		1	
23	14402001		针座轴杆	Needle shaft	Needle punch rod		1	
24	14401006		针座轴杆	Needle shaft	Needle punch rod		1	
25	101513002		针座轴杆	Needle shaft	Needle punch rod		1	
26	10108001		针座轴杆	Needle shaft	Needle punch rod		1	
27	10403015		针座轴杆	Needle shaft	Needle punch rod		1	
28	400001		针座轴杆	Needle shaft	Needle punch rod		1	
29	10104001		针座轴杆	Needle shaft	Needle punch rod		1	
30	11304510004		针座轴杆	Needle shaft	Needle punch rod		1	
31	101511016		针座轴杆	Needle shaft	Needle punch rod		1	
32	10126001		针座轴杆	Needle shaft	Needle punch rod		1	
33	14022001		针座轴杆	Needle shaft	Needle punch rod		1	
34	144070050		针座轴杆	Needle shaft	Needle punch rod		1	
35	10401001		针座轴杆	Needle shaft	Needle punch rod		1	
36	400001		针座轴杆	Needle shaft	Needle punch rod		1	
37	101511025		针座轴杆	Needle shaft	Needle punch rod		1	
38	14407001		针座轴杆	Needle shaft	Needle punch rod		1	
39	13114001		针座轴杆	Needle shaft	Needle punch rod		1	
40	13114001		针座轴杆	Needle shaft	Needle punch rod		1	
41	101511016		针座轴杆	Needle shaft	Needle punch rod		1	
42	10152001		针座轴杆	Needle shaft	Needle punch rod		1	
43	10156001		针座轴杆	Needle shaft	Needle punch rod		1	
44	13009001		针座轴杆	Needle shaft	Needle punch rod		1	
45	13009001		针座轴杆	Needle shaft	Needle punch rod		1	
46	114001001		针座轴杆	Needle shaft	Needle punch rod		1	
47	10126010		针座轴杆	Needle shaft	Needle punch rod		1	
48	113514010		针座轴杆	Needle shaft	Needle punch rod		1	
49	13012001		针座轴杆	Needle shaft	Needle punch rod		1	
50	14022015		针座轴杆	Needle shaft	Needle punch rod		1	

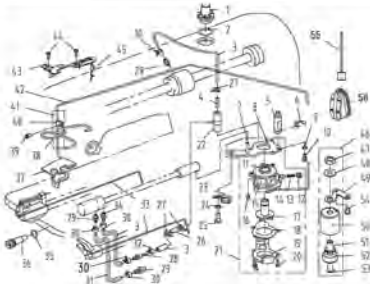


6. 自动倒送料 / Automatic Reverse Feed Components

序号 NO	公称型号	Part NO	名称	Part Name	零件描述	Description	数量	Number
1	101511004		螺钉 M4 x 10 L=2	Screw M4 x 10 L=2	Screw M4 x 10 L=2		1	
2	144000050		针座轴杆	Needle shaft	Needle punch rod		1	
3	11403004000		针座轴杆	Needle shaft	Needle punch rod		1	
4	131502001		针座轴杆	Needle shaft	Needle punch rod		1	
5	113011004		针座轴杆	Needle shaft	Needle punch rod		1	
6	14151014		针座轴杆	Needle shaft	Needle punch rod		1	
7	144000000		针座轴杆	Needle shaft	Needle punch rod		1	
8	14112002		针座轴杆	Needle shaft	Needle punch rod		1	
9	101511026		针座轴杆	Needle shaft	Needle punch rod		1	
10	400001		针座轴杆	Needle shaft	Needle punch rod		1	
11	113022001		针座轴杆	Needle shaft	Needle punch rod		1	
12	113516001		针座轴杆	Needle shaft	Needle punch rod		1	
13	400001		针座轴杆	Needle shaft	Needle punch rod		1	
14	14126001		针座轴杆	Needle shaft	Needle punch rod		1	
15	14105001		针座轴杆	Needle shaft	Needle punch rod		1	
16	14127001		针座轴杆	Needle shaft	Needle punch rod		1	
17	14152001		针座轴杆	Needle shaft	Needle punch rod		1	
18	114001001		针座轴杆	Needle shaft	Needle punch rod		1	
19	14152001		针座轴杆	Needle shaft	Needle punch rod		1	
20	14105001		针座轴杆	Needle shaft	Needle punch rod		1	



零件 NO	品目符号	Part NO	名称	Partname	零件描述	Description	数量	Number
1	114512001		螺钉SM3 L=5.5	Screw SM3 L=5.5			1	
2	14112005		刀架压板	Knife bracket (press component)			1	
3	14119002		螺母M7	Nut M7			1	
4	14119006		螺母M7 (带孔)	Nut M7 (H)			1	
4	1440100200		螺母SM11/54*40 L=4.4	Nut SM11/54*40 L=4.4			1	
5	113512002		螺钉SM11/54*40 L=4.4	Screw SM11/54*40 L=4.4			1	
6	113519002		螺钉SM11/54*40 L=4	Screw SM11/54*40 L=4			1	
7	14119001		螺母M7	Nut M7			1	
8	113512002		螺钉SM11/54*40 L=4.4	Screw SM11/54*40 L=4.4			2	
9	14401001		螺母M7/30	Nut M7/30			1	
10	114514004		螺母SM11/54*40	Nut SM11/54*40			1	
11	14112001		分块片	Needle guard patch			1	
12	201311006		螺钉SM5/54*40 L=5.5	Screw SM5/54*40 L=5.5			1	
13	113520001		螺钉SM11/54*40 L=6.5	Screw SM11/54*40 L=6.5			1	
14	114112011		垫片	Connecting rod			1	
15	141320002		螺母SM10/40*40	Nut SM10/40*40			1	
16	14104001		螺母SM10/40	Nut SM10/40			1	
17	510001		螺钉M4 L=4	Screw M4 L=4			1	
18	505004		螺钉M5 L=14	Screw M5 L=14			1	
19	11511001		螺母SM10/40	Nut SM10/40			1	
20	14104001		螺母SM10/40	Nut SM10/40			1	
21	11217001		弹簧	Spring			1	
22	112130004		1/4英寸螺母	1/4" Nut			1	
23	112130005		螺母M8	Nut M8			2	
24	14130001		1/4英寸螺母	1/4" Nut			1	
25	14101001		螺母M8	Nut M8			1	
26	11510005		螺母SM10/40	Nut SM10/40			1	
27	113514020		螺钉SM11/54*40 L=6	Screw SM11/54*40 L=6			1	
28	11322002		弹簧螺母	Spring cover			1	
29	11322002		弹簧	Spring			1	
30	14104002		螺母SM10/40	Nut SM10/40			1	
31	1400400100		螺母SM10/40	Nut SM10/40			1	
32	101514001		螺钉SM11/4*40 L=6	Screw SM11/4*40 L=6			1	
33	11324001		垫片	Rolling pin			1	
34	11382516001		螺母SM11/54*40	Nut SM11/54*40			1	
35	113514001		螺钉SM11/4*40 L=10	Screw SM11/4*40 L=10			2	
36	11309030		刀架压板	Knife bracket			1	
37	11310004		螺母M6	Nut M6			1	
38	11310011		螺母M6 (带孔)	Nut M6 (H)			1	
39	14001004		螺母SM10/40	Nut SM10/40			1	
39	H0811		GRV 995 刀架压板	Knife bracket			1	
40	10112001		刀架压板	Knife bracket			1	
41	11322001		螺母SM10/40	Nut SM10/40			1	
42	H09001		螺母M4	Nut M4			2	
43	H07002		刀架压板	Knife bracket			2	
44	11309001		螺母SM10/40	Nut SM10/40			1	
45	1401200200		螺母SM10/40	Nut SM10/40			1	
46	517002		螺钉M6 L=10	Screw M6 L=10			2	
47	14112002		螺母M7	Nut M7			1	
48	H03015		刀架压板	Knife bracket			1	
49	10112001		刀架压板	Knife bracket			1	
50	112514006		螺母SM11/4*40	Nut SM11/4*40			1	
51	113512005		螺母M7	Nut M7			1	
52	11481000500		螺母SM11/54*40 L=12	Nut SM11/54*40 L=12			1	
53	10112002		螺母M7	Nut M7			1	
54	/		刀架压板 (1/4英寸)	Knife bracket (1/4")			1	
55	113513002		螺钉SM11/54*40 L=9.5	Screw SM11/54*40 L=9.5			1	
56	12119001		螺母M7	Nut M7			1	
57	113512001		螺钉SM5/54*40 L=6	Screw SM5/54*40 L=6			1	
58	11312001		螺母M7	Nut M7			1	
59	201311006		螺钉SM5/54*40 L=5.5	Screw SM5/54*40 L=5.5			1	
60	113519001		螺钉SM11/54*40 L=12	Screw SM11/54*40 L=12			1	
61	11312001		刀架压板 (带孔)	Knife bracket (H)			2	
62	14012004		刀架压板	Knife bracket (press component)			1	
63	114412001		刀架压板	Knife bracket (press)			1	
64	13803012		垫片	Rolling pin			2	
65	113512002		螺钉SM11/54*40 L=4.4	Screw SM11/54*40 L=4.4			2	
66	11319002		螺母M7	Nut M7			1	
67	114419001		螺母M7	Nut M7			1	
68	113520001		螺钉SM11/54*40 L=6.5	Screw SM11/54*40 L=6.5			2	
69	11312001		垫片	Connecting rod			1	
70	114514004		螺母SM11/54*40	Nut SM11/54*40			1	
71	14404001		螺母M7	Nut M7			1	
72	11322001		螺母SM10/40	Nut SM10/40			1	
73	505004		螺钉M5 L=14	Screw M5 L=14			1	
74	11327001		弹簧	Spring			1	



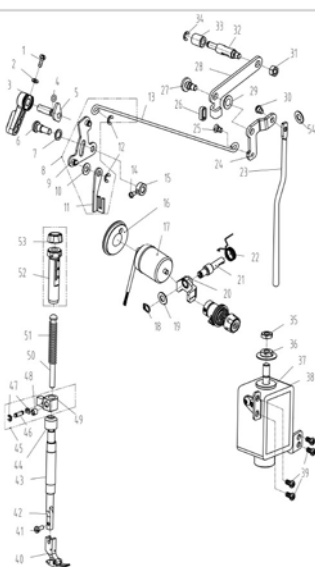
8. 润滑油、油量检测部件/Oil Lubrication & Oil Measuring Components

序号NO	零件序号	Part NO	名称	PartName	零件描述	Description	数量	Number
1	11211304		油窗		Oil sight window		1	
2	13172019		油窗O型圈		Rubber ring		1	
3	14021001		油管Φ4×96		Tubing 4x96		0.8M	
4	14436001		油管Φ4×96		Aluminum tubing 3/4x96		1	
5	10153006		油泵连接螺栓		Oil pump connecting bolt		1	
6	11529019		开口销Φ10		Snap ring 10		1	
7	13121001		下油窗		Head driving shaft oil tube		1	
8	10112020		油泵安装座		Oil pump installing base		1	
9	W01002		弹簧		Spring washer		1	
10	209512001		螺钉SM11/64"×40 L=10.5		Screw SM11/64"×40 L=10.5		1	
11	10103012		油泵密封圈		Oil pump Sealing		1	
12	101530007		柱塞螺钉		Plunger Screw		1	
13	10121013		柱塞圈		Plunger spring		1	
14	10122019		柱塞杆套		Plunger		1	
15	10120010		油泵体		Oil pump		1	
16	504013		螺钉M3 L=4		Screw M3 L=4		3	
17	10111303		油泵衬套		Oil pump impeller		1	
18	13112025		油泵衬套罩		Oil pump impeller cover		1	
19	13111307		油泵罩		Oil pump impeller cover		1	
20	101530006		螺钉ST2.0 L=10		Screw ST2.0 L=10		3	
21	1015300100		油泵分油器		Lubricating oil pump component		1	
22	10136005		橡胶垫圈		Rubber part		1	
23	14313007		油杯		Oil cup		1	
24	W01004		油杯/13113007油杯		Spring Washer M6		1	
25	116330001		螺钉SM11/64"×28 L=14.5		Screw SM11/64"×28 L=14.5		1	
26	14021001		油管		Aluminum tubing		1	
27	113111004		尼龙扎带		Cable band		4	
28	14021004		油窗		Oil window		1	
29	14021002		油窗		Oil window		1	
30	20429001		油管卡箍		Oil pipe clamp spring 4.5		4	
31	14021001		油管Φ4×96		Tubing 4x96		0.15M	
32	30128007		油管卡箍		Oil pipe clamp spring 6		1	
33	10123019		油杯		Oil cup		2	
34	14021001		油管		Oil window		1	
35	14021011		油窗		Rubber ring		1	
36	140210001		油量调节螺钉		Oil volume adjusting screw		1	
37	14021001		油窗		Oil hole kit		1	
38	14021001		油量调节螺钉		Adjustment screw		1	
39	101511004		螺钉SM11/64"×28 L=7		Screw SM11/64"×28 L=7		1	
40	10112013		油窗		Oil tube clamp		1	
41	10121007		油量调节螺钉		Oil return tube component		1	
42	10121008		油窗		Oil return valve		1	
43	10121005		油量调节螺钉		Oil line fitting plate (H)		1	
44	101511010		螺钉SM11/64"×40 L=11 (塑料)		Screw SM11/64"×40 L=11 (H)		2	
45	10121010		油窗		Oil work (H)		1	
46	1149300100		油量检测油窗		Oil measuring device		1	
47	14021001		油窗		Nut		1	
48	14021001		油窗		Washer		1	
49	14021006		油量检测油窗		Pull spring fitting plate		1	
50	14021004		油量检测油窗		Shell		1	
51	14021006		油量检测油窗		Guide plate		1	
52	14021002-01		油窗		Head		1	
53	W01040		开口销Φ10		Ring 8		1	
54	101511026		螺钉SM11/64"×28 L=9		Screw SM11/64"×28 L=9		2	
55	1141200100		油窗		Oil work		1	
56	13811215		油窗		Oil window		1	



9. 油窗、膝抬压脚部件/Oil Reservoir & Knee Lifter Components

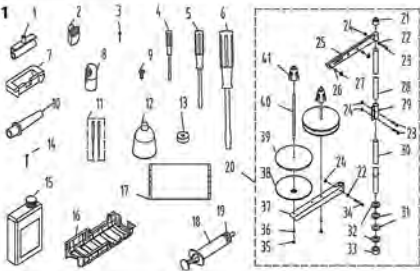
序号NO	零件序号	Part NO	名称	PartName	零件描述	Description	数量	Number
1	114311010		油窗		Oil reservoir		1	
2	14021001		油窗密封圈		Seal		1	
3	H05012		开口销Φ4		Snap ring 4		1	
4	40120013		垫圈6.2×15×1		Washer 6.2×15×1		2	
5	14021002		油窗		Knee lifter push rod spring		1	
6	11211305		油窗		Cable band		1	
7	114111012		油窗		Knee lifter push rod		1	
8	114122008		油窗		Knee lifter push rod flat		1	
9	101511023		螺钉SM11/64"×28 L=6.5		Screw SM11/64"×28 L=6.5		1	
10	10111001		油窗		Oil reservoir magnet		1	
11	1402100100		油窗		Lifting foot bidirectional crank arm		1	
12	10112027		油窗		Knee lifter crank		1	
13	14021016		油窗		Knee lifter spring		1	
14	H05012		油窗		Snap ring 9		1	
15	1402100100		油窗		Knee lifter shaft		1	
16	501501		螺钉M6 L=20		Screw M6 L=20		2	
17	101514004		油窗		Nut M6		2	
18	101512002		螺钉M6 L=24.5		Screw M6 L=24.5		1	
19	505240		螺钉M6 L=20		Screw M6 L=20		4	
20	20530014		油窗		Ring		1	
21	101511015		螺钉SM11/64"×28 L=13		Screw SM11/64"×28 L=13		1	
22	114511008		螺钉M4 L=8		Screw M4 L=8		1	
23	11411201		油窗		Wire clamp		1	



10. 压料、自动抬压脚部件 / Presser Bar & Auto Lifter Components

序号 NO	公司特号	Part NO	名称	PartName	零件描述	Description	数量	Number
1	101511010		螺钉SM3/64"x40 L=11		Screw SM3/64"x40 L=11		1	
2	10128002		压脚垫手螺帽7垫圈		Washer		1	
3	13811029		压脚垫手		Hand lifter		1	
4	001004		O型圈		Rubber ring		1	
5	1441000200		压脚垫手凸轮分部件		Hand lifter cam asm		1	
6	131520001		前杠杆螺帽		Screw		1	
7	10128016		螺帽前垫板垫圈		Washer		2	
8	1441200300		前杠杆组件		Front lever assembly		1	
9	1441200400		抬压脚前杠杆分部件		Lift front lever component		1	
10	14428002		垫圈6.5x13x0.8		Washer 6.5x13x0.8		1	
11	14412005		压脚升降板		Lifting plate		1	
12	H05003		GB/T896-1986 垫圈 5		Snap ring 5		2	
13	14412006		拉杆		Pull rod		1	
14	114511015		螺钉SM3/64"x40 L=6		Screw SM3/64"x40 L=6		1	
15	13108001		垫圈		Ring		1	
16	114122006		松线油封		Oil seal		1	
17	11413001800		松线电磁铁组件		Solenoid		1	
18	H03054		吊钩6		Snap ring 6		1	
19	14128001		松线顶板垫片		Loose top gasket		1	
20	114401006		AGP-Z-0331松线顶板		Wire release plate		1	
21	114402005		AGP-E-0351松线顶板定位销		Pin		1	
22	114427003		AGP-E-0349松线顶板复位簧		Spring		1	
23	114412006		抬压脚顶杆		Presser foot lever		1	
24	14412012		膝控制抬压脚后杆		Knee control lever rear lever		1	
25	101520004		抬压脚拉杆螺帽SM3/16"x32		Screw SM3/16"x32		1	
26	14422006		抬压脚后杆橡胶垫		Rubber pad		1	
27	144520004		后杆杆轴位螺钉		Hinge screw		1	
28	14412015		自动抬压脚后杆		Knee lifter back lever		1	
29	14428001		平垫圈8.2x15x1		Flat washer 8.2x15x1		1	
30	137520001		抬压脚顶杆轴位螺钉		Axial screw		1	
31	N01012		螺母M6		Nut M6		1	
32	14402006		自动抬压脚顶杆		Knee lifter connecting rod		1	
33	14411001		塑料滚轮		Wheel		1	
34	11329020		垫圈5		Snap ring 5		1	
35	114426001		电磁铁接头		Connector		1	
36	113516004		法兰螺母M8		Flange nuts M8		1	
37	11322008		电磁铁上垫片		Washer		1	
38	11443004200		抬压脚电磁铁组件		Solenoid asm		1	
			抬压脚电磁铁组件 (厚料)		Solenoid asm (H)		1	
39	101511001		螺钉SM3/16"x28 L=9		Screw SM3/16"x28 L=9		4	
40	1311600100		抬压脚组件		Presser foot asm		1	
	1311600100		抬压脚组件 (H)		Presser foot asm (H)		1	
41	101511009		螺钉SM3/64"x40 L=10.5		Screw SM3/64"x40 L=10.5		1	
42	11402009		压杆		Presser bar		1	
43	10101012		压杆衬套		Presser bar bushing/lower		1	
44	10122112		压杆防尘盖		Pressure bar oil cover		1	
45	1440900200		压杆导向组件		Strut guide asm		1	
46	14426002		压杆导向销		Push rod guide pin		1	
47	H05002		GB/T896-1986垫圈3		Snap ring 3		2	
48	101515007		螺钉SM1/4"x40 L=8		Screw SM1/4"x40 L=8		1	
49	14409002		压杆导向		Presser bar guide bracket		1	
50	10102003		调压导杆		Press regulating guide bar		1	
51	113827010		调压弹簧		Press regulating spring		1	
	10127024		调压弹簧 (厚料)		Press regulating spring (H)		1	
52	1138NS30003		调压螺钉SM1/2"x28		Screw SM1/2"x28		1	
53	1138NS16005		调压螺母SM1/2"x28		Nut SM1/2"x28		1	
54	114428001		平垫圈5x10x0.8		Washer 5x10x0.8		1	

11



11. 机头附件/Machine Head Accessories

序号 NO	公司型号	Part NO	名称	PartName	零件描述	Description	数量	Number
1	1011208100		机头连接轴螺母		Hinge component		2	
2	14022002		机头螺母		Nut component		2	
3	101130010		机头连接轴螺母 (PTT)		Nut (PTT)		2	
4	10111004		螺帽 (小)		Lock washer (small)		1	
5	10111003		螺帽 (中)		Lock washer (medium)		1	
6	20711047		螺帽 (大)		Lock washer (large)		1	
7	10122060		机头连接轴螺母		Nut connecting rubber cushion		2	
8	14022003		机头螺母		Nut support		2	
9	101150014		螺帽 M4 L=20		Screw M4 L=20		5	
10	110211001		机头螺母		Machine head rest pin		1	
11	13811001		螺帽 M4 L=14		Washer M4 L=14		4	
12	10111002		螺帽 M4 L=20 (螺帽)		Washer M4 L=20 (H)		4	
13	20111039		螺母		Nut		1	
14	10115003		螺母		Nut		2	
15	10115001		大螺母 (H)		Nut (H)		2	
16	13811002		螺母 (H)		Nut (H)		2	
17	1141500001		螺母 (H)		Nut (H)		4	
18	1381131200		机头螺母		Clamp component		1	
19	14411002		机头螺母		Clamp key		1	
20	11411001		机头螺母		Dust cover		1	
21	13811320		机头螺母		Cylinder		1	
22	11411030		机头螺母		Butter		1	
23	1381100300		机头螺母		Thread stand arm		1	
24	20111019		机头螺母		Spool rest rod rubber cap		1	
25	14411001		机头螺母		Washer M5		2	
26	10111001		螺帽 M5 L=10		Screw M5 L=10		3	
27	14411001		螺帽 M5		Nut M5		4	
28	13811002		螺帽 M5 L=10		Spool rest arm upper		1	
29	10111001		螺帽 M5		Thread guide ring		2	
30	13811001		螺帽 M5		Thread guide ring		2	
31	13811019		螺帽 M5		Spool rest rod upper		1	
32	13811011		螺帽 M5		Spool rest rod joint		1	
33	13811020		螺帽 M5		Spool rest rod lower		1	
34	10122106		螺帽 M5		Spool rest end rubber ring		2	
35	14411002		螺帽 M5		Washer M5		2	
36	14411001		螺帽 M5		Nut M5		1	
37	13811001		螺帽 M5 L=11.5		Screw M5 L=11.5		1	
38	14411001		螺帽 M5		Nut M5		2	
39	14411002		螺帽 M5		Spring washer M5		2	
40	13811023		螺帽 M5		Spool rest arm lower		1	
41	13811024		螺帽 M5		Spool rest		2	
42	20111010		螺帽 M5		Spool rest cushion		2	
43	20111006		螺帽 M5		Spool pin		2	
44	13811025		螺帽 M5		Spool rest		2	

杰克缝纫机股份有限公司

杰克缝纫机
全球销量遥遥领先

公司地址：中国浙江省绍兴市上虞区上虞经济开发区1000号
WU 1000, JIANGSU PROVINCE, JIANGSU DISTRICT, JIANGSU CITY, JIANGSU

邮编：311000

电话：0578-8516-8817/88177714

传真：0578-8516-8817/88177714

邮编：0578-8516-8817/88177714

邮编：0578-8516-8817/88177714

邮编：0578-8516-8817/88177714

邮编：0578-8516-8817/88177714

邮编：0578-8516-8817/88177714

邮编：0578-8516-8817/88177714

邮编：0578-8516-8817/88177714

邮编：0578-8516-8817/88177714

邮编：0578-8516-8817/88177714



http://www.chinajack.com